

# Upload/Download Software V6.81 For Model 155 Mass Flow Computers

## DCN: 360168 Rev C

November , 2007

Kurz Instruments, Inc.  
2411 Garden Road  
Monterey, CA 93940-5394  
831-646-5911  
[www.kurz-instruments.com](http://www.kurz-instruments.com)

## UPLOAD/DOWNLOAD SOFTWARE V6.81 (7/98) FOR MODEL 155 MASS FLOW COMPUTERS

### Installation and Operation

The Upload/Download program is contained in the Upload-Download-V6.81x directory on the CD provided. To use this program copy the folder directly to your hard disk drive. In WINDOWS ( Win98, NT, XP or Vista), open the V6.81x folder then double click the Menu.bat icon. A list of options will appear on your PC screen (See Figure 1). **Simply follow the on screen prompts.** For “On-line help” choose option 6 of the menu. Also see 340155-26, Menu State diagram for KAS 6.81 found in the Series 155 Mass Flow Computer Summary Guide DCN: 360204-6.81.

### UPLOAD/DOWNLOAD V6.81 NOTES:

Upload/Download V6.81 is required for use with Model 155 systems using KAS 6.81 (4-2-98) firmware and is read (upload) compatible with prior KAS releases. To see your Model 155 KAS version, press H twice on the 20 key keypad for help. Type the ? if you are in the PC terminal mode for a complete list of supported keys.

The communication baud rate starting with KAS 6.54 to KAS 6.81 is 9600 baud whereas all earlier KAS versions are 1200 baud. This is menu selectable in Upload/Download V6.81 so older KAS configurations may be read and upgraded. You cannot write (download) from Upload/Download 6.81 to older KAS versions except 6.60. See “KASVERX.htm” in the folder for a listing of what is supported. The 6.81x folder also has a Readme.txt file that describes more on serial connections, 6.81 KAS firmware updates etc.

### MODEL 155 TO PC RS-232 SERIAL PORT CONNECTIONS:

A straight through female DB-9 cable is required for PC to Model 155 port connections. See the following Field Wiring diagrams in the Series 155 Summary Guide (DCN: 360204-6.81) for the pin out and location of the terminal and data/printer ports:

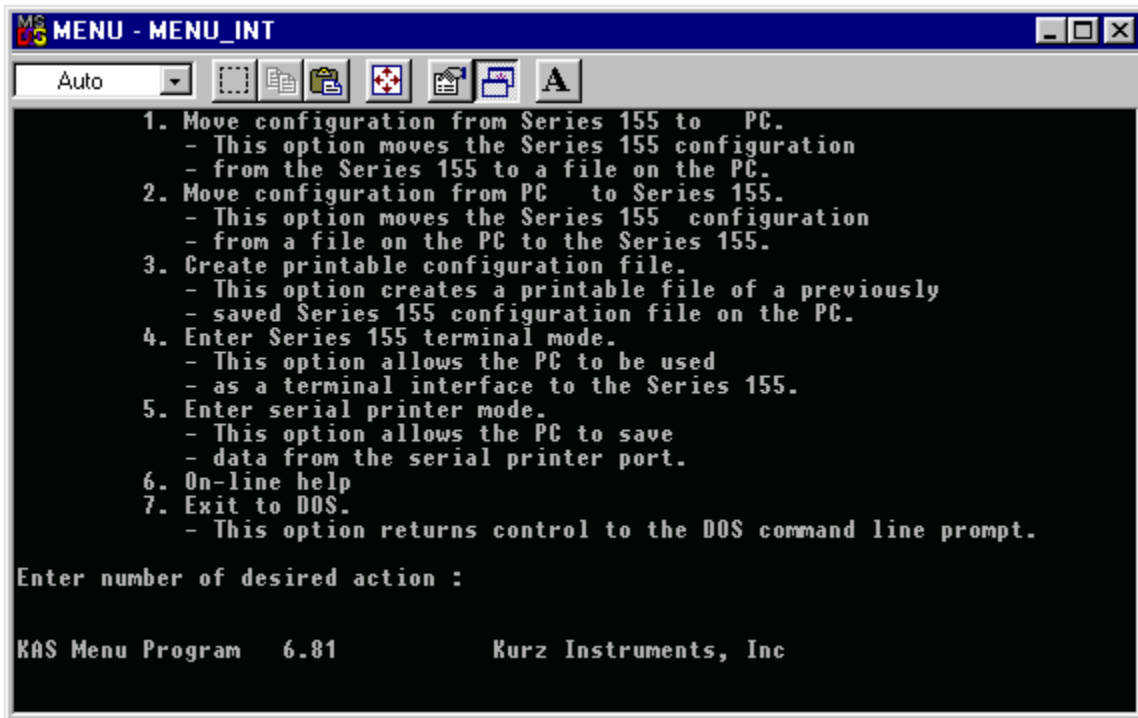
340155-29	Model 155Jr
340155-44	Model 155A
340155-45	Model 155B
340155-55	Model 155C-2/E-2/RM-2
340155-57	Model 155C-2/E-2/RM-2 with pulsed outputs

All Model 155 RS-232 ports use the following protocol:

Baud Rate: 9600 (KAS 6.54 to KAS 6.81) or 1200 (All earlier versions)

Kurz Instruments, Inc.

Parity:           None or Ignore  
Data Bits:       8  
Stop Bits:       1 or 2  
Start/Stop Enable:   Enable  
Control Character:   Normal  
Line Feed:       Yes

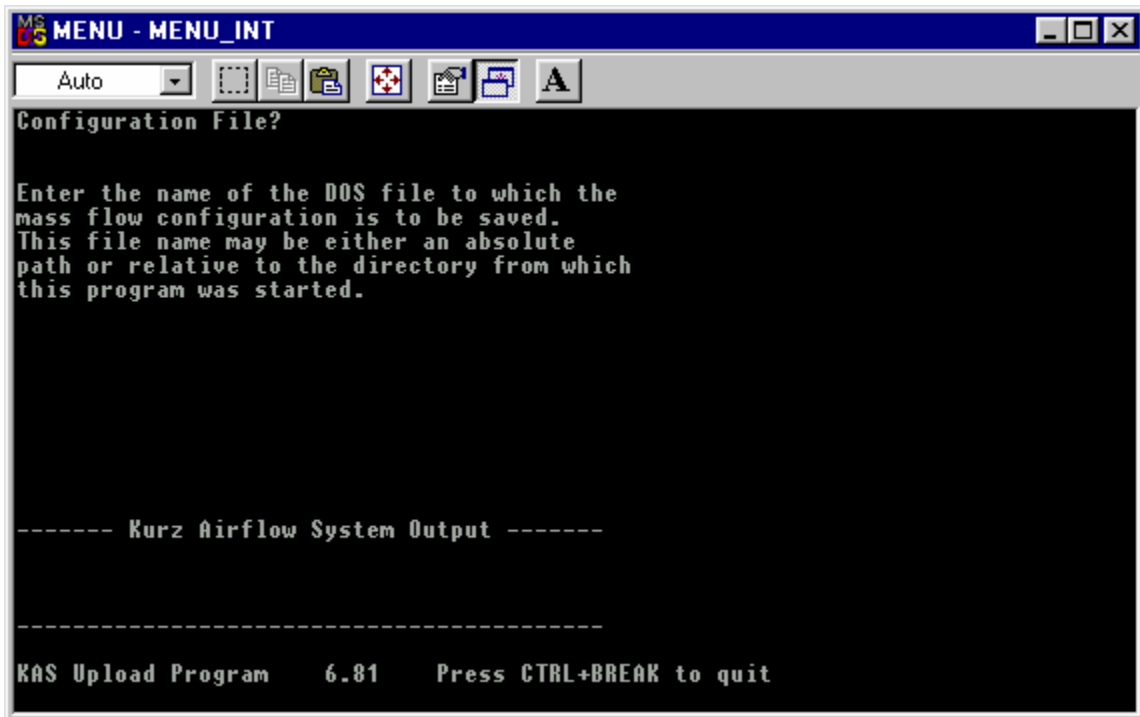
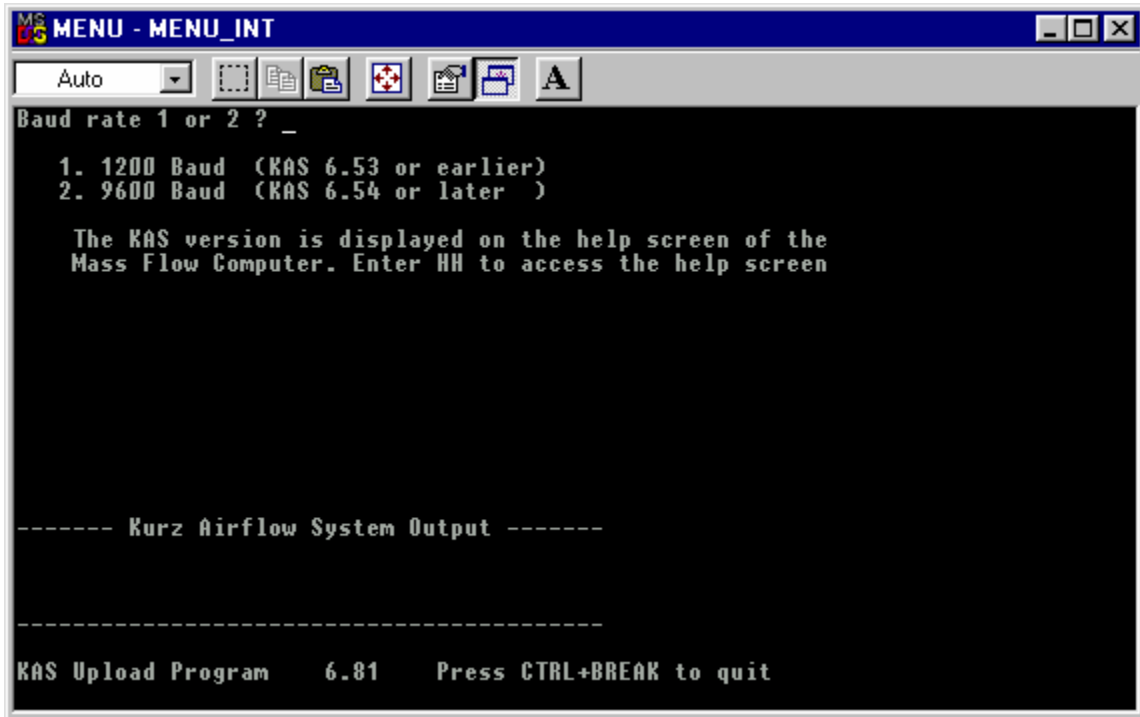


**Figure 1.**

Option 4 of the menu, “Terminal Mode” (See Figure 1) allows access to all of the Model 155 functions via a PC. To Start and stop this function use the PC + key. Use the ? key to see all of the supported Model 155 keys.

Option 5 of the menu, “Serial Printer” allows data capture to a serial printer or a PC. See the above described documents for the pin out and location of these Data/Printer ports. A sample printout of a Data Log appears later in this document.

The following figures are an example of option 1 (Upload) screens. For KAS 6.81, select 2 (9600 Baud).



If a DOS path is not defined, the data will be saved to the folder in which this program was installed. Make a note of the file name and extension used in order to allow easy

Kurz Instruments, Inc.

retrieval of the files at a later date. For extensions, we recommend .cfg for configuration files and .prn for printable files.

For all other functions of the menu in Figure one, simply follow the on screen prompts.

**DATA/PRINTER LOG EXAMPLE:**

Time: 15:01 1/31/2003

```
METER #1
ID:METER-000001
FLOW RATE
  3003.63 SCFM
SCF= 12465.3
ET =    4.2 MIN
AVERAGE VELOCITY
  3003.61 SFPM
FLOW AREA
  1 SQ FT
CALIBRATION
FACTOR 1.000
AVG'D CHS A
A= 3003.61 SFPM
INPUT=2.5030 V
METER #2
ID:METER-000002
FLOW RATE
  3900.16 SCFM
SCF= 16225.1
ET =    4.2 MIN
AVERAGE VELOCITY
  3900.16 SFPM
FLOW AREA
  1 SQ FT
CALIBRATION
FACTOR 1.000
AVG'D CHS B
B= 3900.15 SFPM
INPUT=2.6001 V
METER #3
ID:METER-000003
FLOW RATE
  5607.28 SCFM
SCF= 23379.5
ET =    4.2 MIN
AVERAGE VELOCITY
  5607.28 SFPM
FLOW AREA
```

Kurz Instruments, Inc.

1 SQ FT  
CALIBRATION  
FACTOR 1.000  
AVG'D CHS ABC  
A= 3003.6 SFPM  
INPUT=2.5030 V  
B= 3900.15 SFPM  
INPUT=2.6001 V  
C= 9918.05 SFPM  
INPUT=4.9590 V