

REVISION HISTORY				
ECO NUMBER	REV. NUMBER	DESCRIPTION OF CHANGE	ORIGINATED BY	EFFECTIVE DATE
C47165	A	Created	Oscar N. Morla	09-15-2006
C47260	A1	Updated to include Vista.	Bruce B. Burton	10-10-2007
C47265	B	Corrected procedure to account for Vista and XP issues.	Scott Schindler	12-27-2007
C47401	C	Updated to reflect new driver Cypress driver.	Scott Schindler	04-07-2010
C47473	D	Updated to incorporate new FTDI driver support.	Scott Schindler	08-08-2011
C47475	E	Updated to include installing FTDI driver from Customer CD.	Scott Schindler	08-22-2011

USB Driver Installation

APPROVALS/SIGN-OFF			
	PRINT NAME	SIGNATURE	DATE
ORIGINATOR	Scott Schindler	Scott Schindler	08-22-2011
REVIEWER	Oscar Morla	Oscar Morla	08-22-2011
REVIEWER	Bruce B. Burton	Bruce B. Burton	08-22-2011

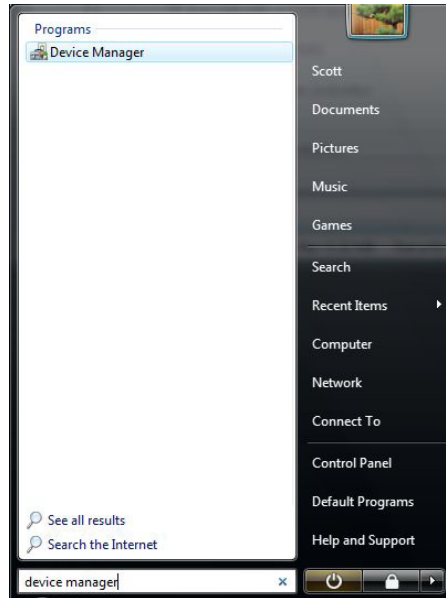
The newest MFTB devices when connected to a Windows PC with internet access will automatically find, download, and install the USB driver required. If internet access is not available or the automated process does not work, follow the instructions below.

How to determine which Driver is required

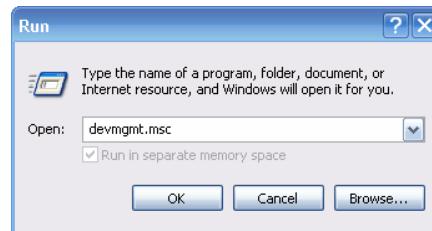
1. The MFTB device's Sensor Control (SC) board's barcode will determine which USB driver is required for your Windows PC. The barcode can be found in the menus of the MFTB device, on the printable configuration file, or on the SC board itself.
2. If the barcode is C51938 or higher, the Windows OS should find, download and install the USB driver without needing manual input, assuming internet access is available. The SC board's that require the latest driver started shipping at the end of August 2011. The latest driver can be found at the following website: <http://www.ftdichip.com/Drivers/VCP.htm>. If internet access is unavailable then the driver can be installed from the Customer CD. It will be found in the USB Device Driver for the PC\FTDI USB Serial Driver directory. For step-by-step instructions see the [FTDI USB Driver Port](#) section.
3. If the barcode is in the A, B or early C series then it will require a manual install of the USB driver. The driver to install can be found on the Customer CD or also can be installed as an option when installing KzComm. It will be found in the USB Device Driver for the PC\Kurz USB Device Driver directory. For step-by-step instructions see the [Kurz USB-HID COM Port](#) section.

How to determine if the Driver was Installed Properly

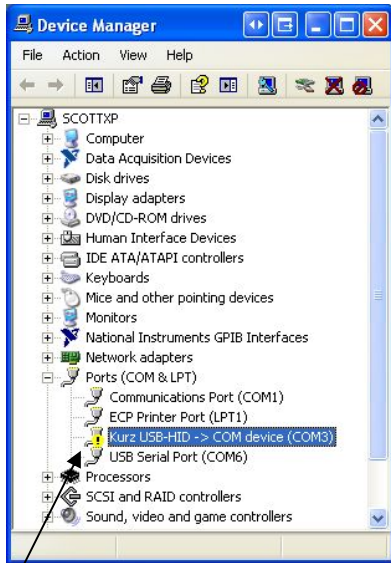
1. **(7, Vista)** Open the Device Manager by clicking on the Windows Start button and typing *device manager* in the text box and click the program listed in the programs section. Administrator privileges are required to install device drivers.



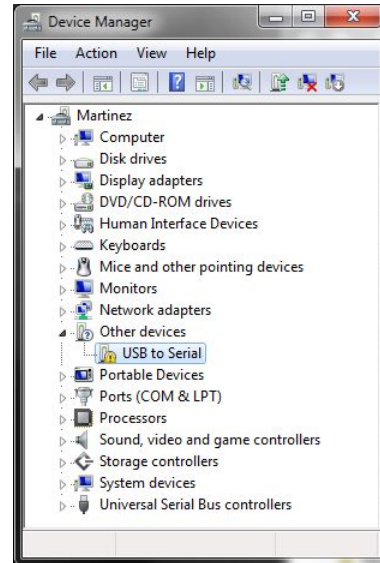
- (XP)** Open up the device manager from the Control Panel or by clicking the Start button, clicking Run..., entering *devmgmt.msc* in the text box, and clicking OK. Administrator privileges are required to install device drivers.



2. If present in the Device Manager, expand the *Ports (COM & LPT)*, *Other Devices* and *Human Interface Devices* sections.
3. Plug-In the MFTB device to one of the USB ports of the computer. The MFTB device must be powered to proceed. A new entry should register one of the sections listed in step 2. If the device shows under the *Other Devices* or *Human Interface Devices* sections then the driver needs to be installed manually. If the device shows with a yellow exclamation mark then the driver needs to be installed manually. See the section on Driver Installation. Otherwise the driver was found and installed by Windows without user input.

**Driver Version Incompatible**

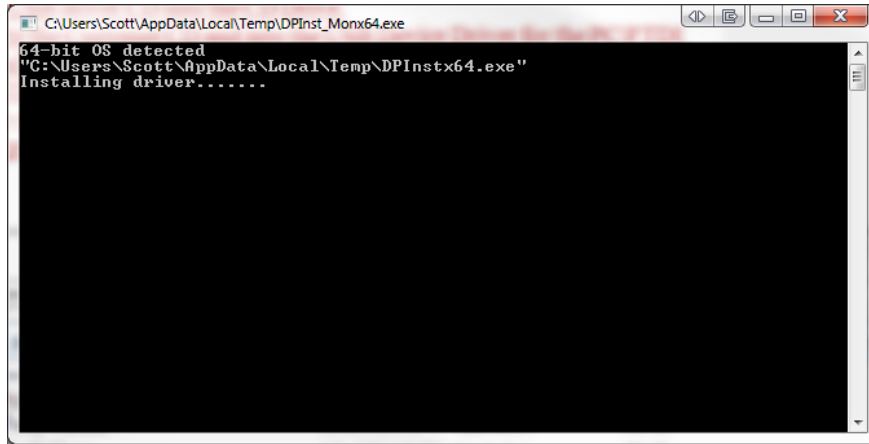
Exclamation Point

**Driver Not Found**

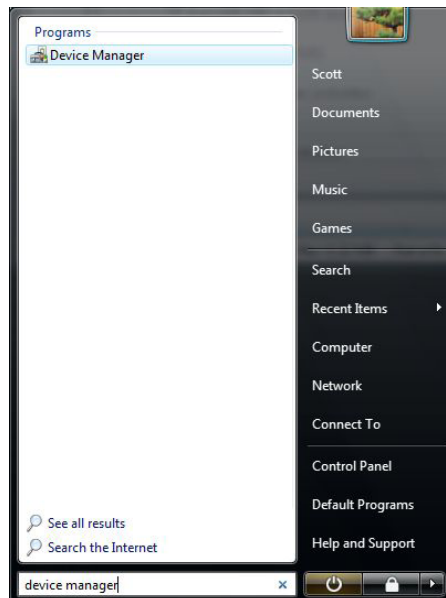
Driver Installation (FTDI USB Serial Port)

Supported versions of Windows: 7, Vista, and XP

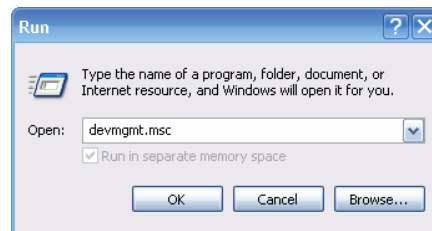
1. Insert the USB driver CD into the CD Drive.
2. Navigate to the Customer CD and into the USB Device Driver for the PC\FTDI USB Serial Driver directory.
3. Run the CDM20814_Setup.exe program by double clicking it.
4. If prompted by the User Account Control to run the setup program choose Yes to allow the program to make changes. Note that device driver installation needs to be completed in an administrator account.
5. A command prompt window should appear showing that the driver is being installed. Sometimes the window flashes up and down too quickly to see. You can verify that the driver is installed by rerunning the program until you see the installation window.



6. **(7, Vista)** Open the Device Manager by clicking on the Windows Start button and typing *device manager* in the text box and click the program listed in the programs section. Administrator privileges are required to install device drivers.

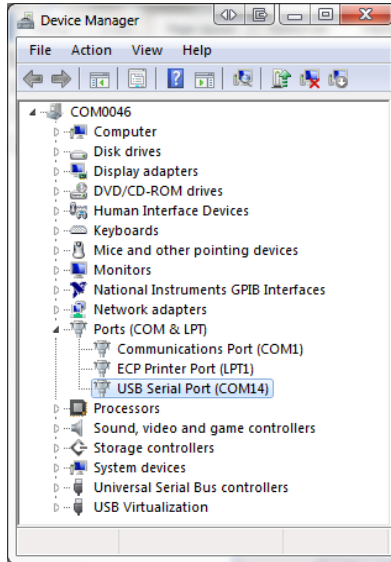


- (XP)** Open up the device manager from the Control Panel or by clicking the Start button, clicking Run..., entering *devmgmt.msc* in the text box, and clicking OK. Administrator privileges are required to install device drivers.



7. Plug-In the MFTB device to one of the USB ports of the computer. The MFTB

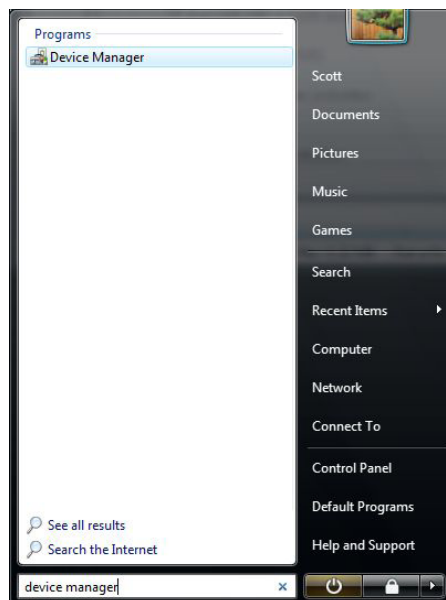
device must be powered to proceed. A new entry should register in the *Ports (COM & LPT)* category called *USB Serial Port*.



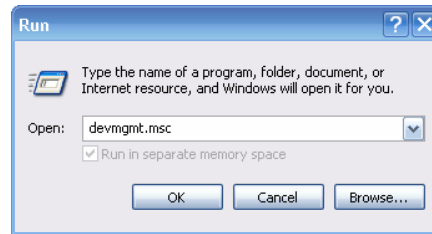
Driver Installation (Kurz USB-HID COM Port)

Supported versions of Windows: 7, Vista, and XP

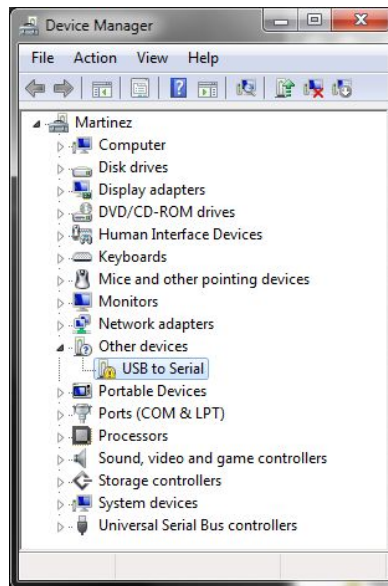
1. Insert the USB driver CD into the CD Drive.
2. (**7, Vista**) Open the Device Manager by clicking on the Windows Start button and typing *device manager* in the text box and click the program listed in the programs section. Administrator privileges are required to install device drivers.



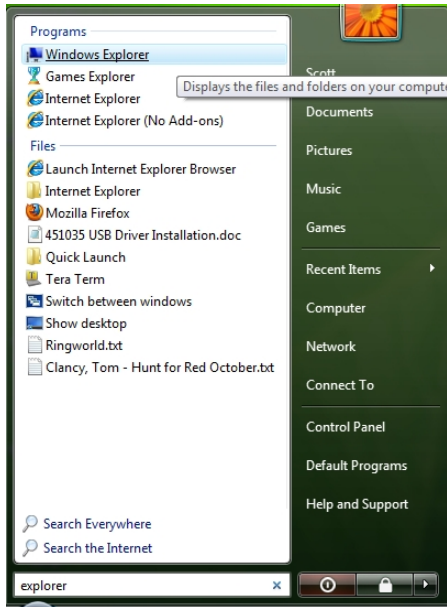
(XP) Open up the device manager from the Control Panel or by clicking the Start button, clicking Run..., entering *devmgmt.msc* in the text box, and clicking OK. Administrator privileges are required to install device drivers.



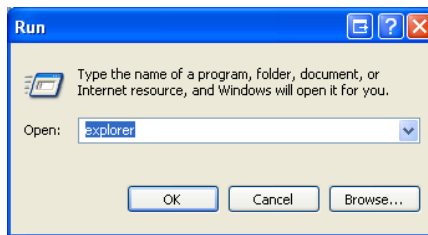
3. Plug-In the MFTB device to one of the USB ports of the computer. The MFTB device must be powered to proceed. A new entry should register in the *Other devices* category called *USB to Serial*.



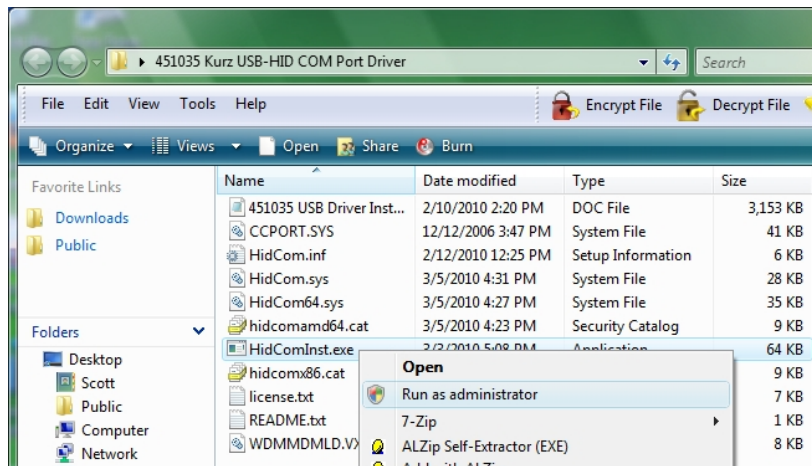
4. **(7, Vista)** Open the Windows Explorer by clicking on the Windows Start button and typing *explorer* in the text box and click the program listed in the programs section.



(XP) Open up the Windows Explorer by clicking the Start button, clicking Run..., entering *explorer* in the text box, and clicking OK.



5. Navigate to the location of the Kurz USB-HID -> COM driver.
6. Locate *HidComInst.exe*.
7. (7, Vista) Right click *HidComInst.exe* and choose *Run as administrator*.



(XP) Run *HidComInst.exe* by double clicking on it.

8. **(7, Vista)** Windows will prompt the user to verify the installation of the device software. Click *Install*. Note: Windows 7 (32 and 64-bit) and Vista 64-bit OS support Kernel-Mode Code Signing (KMCS) therefore the window will look similar to the image below labeled Authenticode Signature. Windows Vista 32-bit, and XP (32 and 64-bit) do not support KMCS.

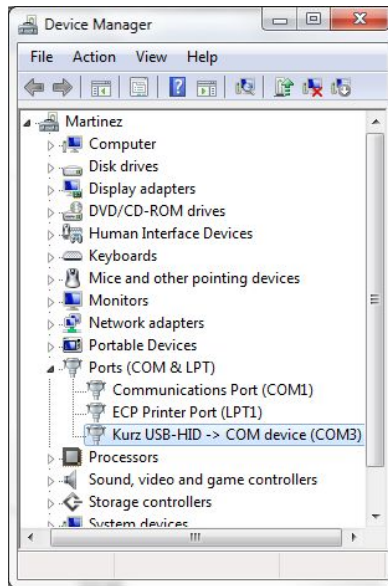


Authenticode Signature

- (XP)** Windows will prompt the user to verify the installation of the device software. Note: The Kurz USB-HID -> COM driver is not Windows Logo tested. Click *Continue Anyway*.



9. After several seconds the Device Manager will update to show the new port. The MFTB Device is now registered as a COM port. In this case the COM port to be used by a terminal emulator program or KzComm is COM3. If the MFTB Device has not registered as a COM port after one minute, cycle the power on the MFTB Device. It should now register.

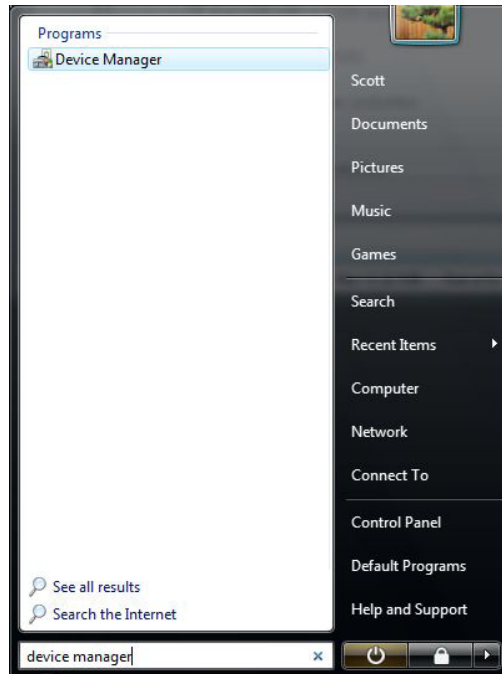


10. If the device does not register, see the Explicit Driver Installation sections for Windows [7](#), [Vista](#), and [XP](#).

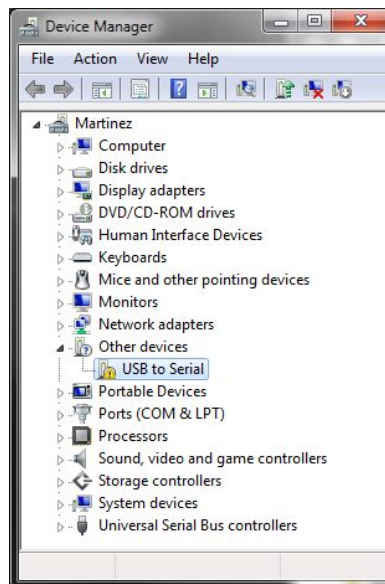
Explicit Driver Installation (Kurz USB-HID COM Port)

Supported versions of Windows: 7 and Vista

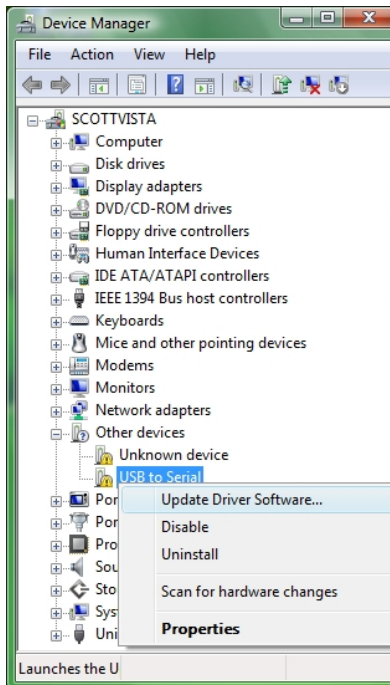
1. Insert the USB driver CD into the CD Drive.
2. Open the Device Manager by clicking on the Windows Start button and typing *device manager* in the text box and click the program listed in the programs section. Administrator privileges are required to install device drivers.



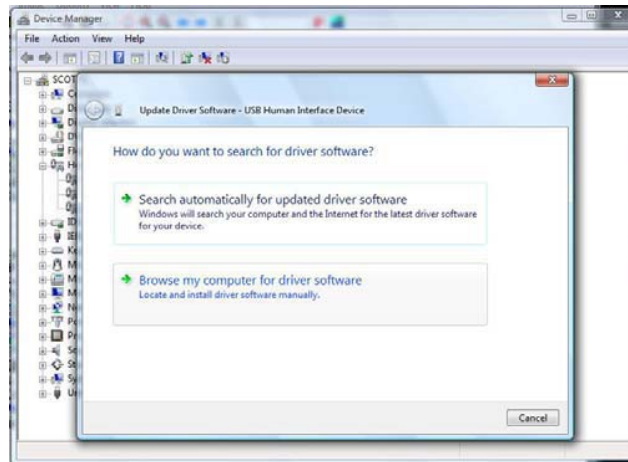
3. Plug-In the MFTB device to one of the USB ports of the computer. The MFTB device must be powered to proceed. A new entry should register in the *Other devices* category called *USB to Serial*.



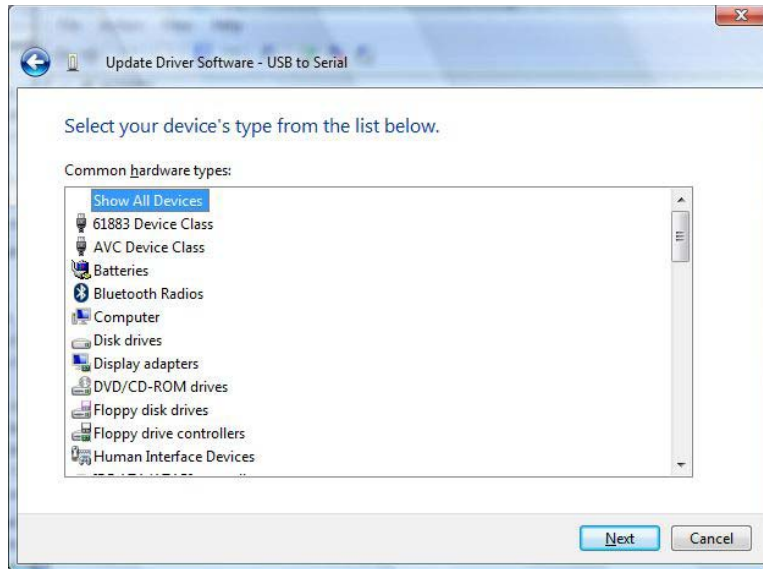
4. Right click on the new *USB to Serial* and click *Update Driver Software...*



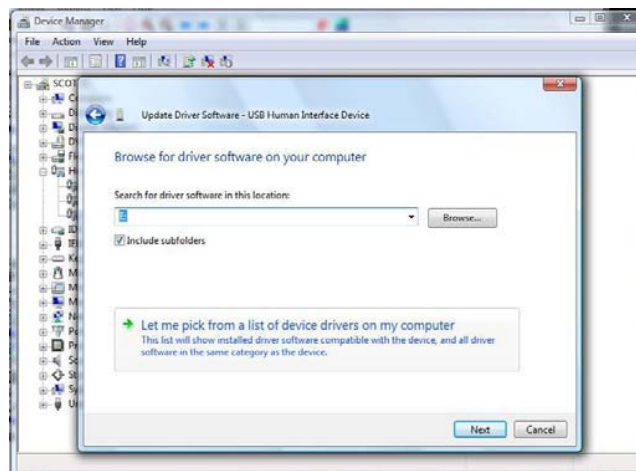
5. Choose the *Browse my computer for driver software* option.



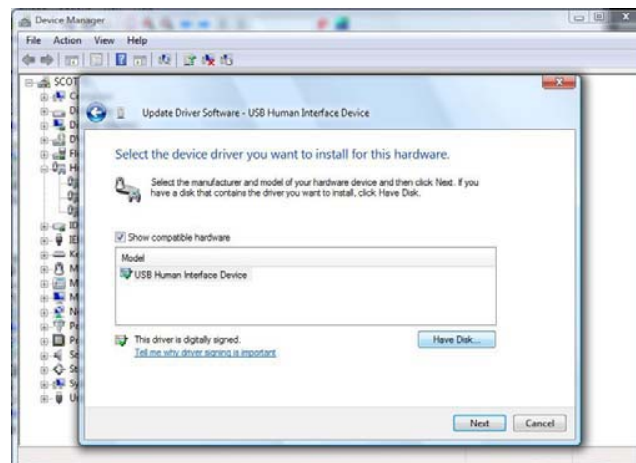
6. If you see the following window, select the *Show All Devices* option.



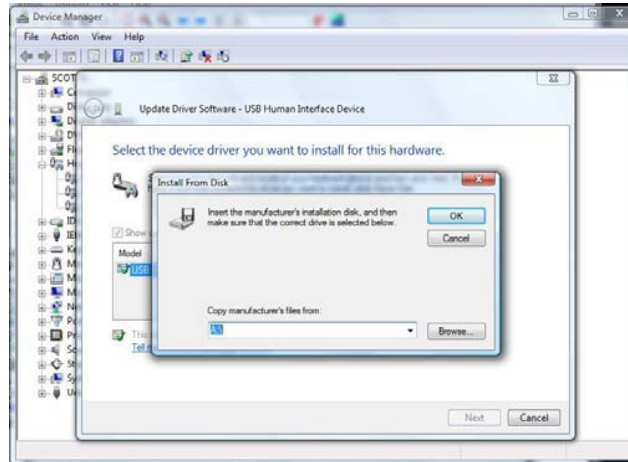
7. Choose the *Let me pick from a list of device drivers on my computer* option.



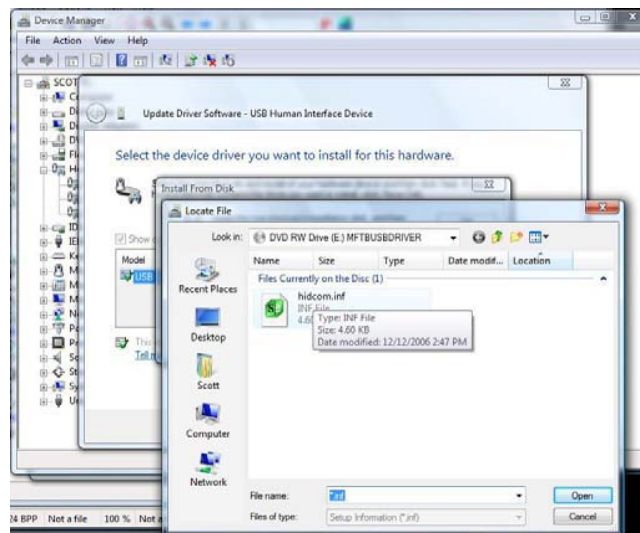
8. Select the *Have Disk...* button.



9. Click the *Browse* button.



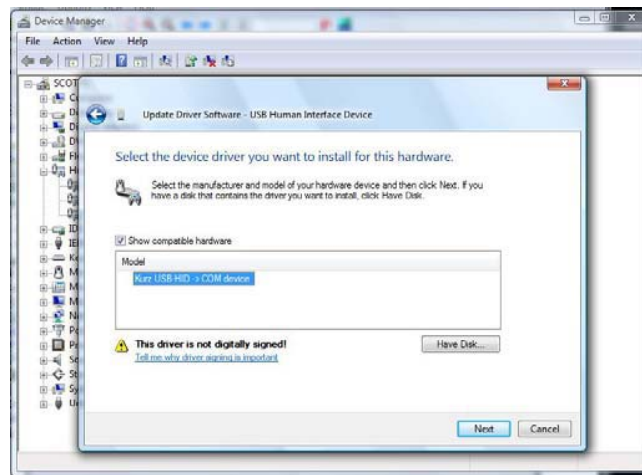
10. In the Locate File window browse to the CD with the Kurz USB Device Driver for the PC and select the hidcom.inf file. This file may be found in the Kurz USB Device Driver for the PC folder.



11. In the Install From Disk window, the path should be to the directory where the file you just located is found. Click OK.
12. The Kurz USB – HID -> COM Device should now be found in the Model box. Click Next. Note: Windows 7 (32 and 64-bit) and Vista 64-bit OS support Kernel-Mode Code Signing (KMCS) therefore the window will look similar to the image below labeled Authenticode Signature. Windows Vista 32-bit, and XP (32 and 64-bit) do not support KMCS therefore the window will look similar to the image below labeled Not Digitally Signed.

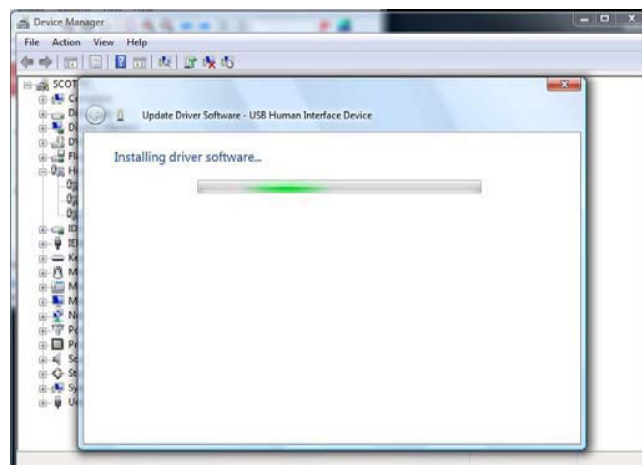


Authenticode Signature



Not Digitally Signed

13. Installation of the driver will start.



14. Windows will prompt to install software. Note: Windows 7 (32 and 64-bit) and Vista 64-bit OS support Kernel-Mode Code Signing (KMCS) therefore the window will look similar to the image below labeled Signed Signature. In this case, click Install. Windows Vista 32-bit, and XP (32 and 64-bit) do not support KMCS therefore the window will look similar to the image below labeled Unverified Publisher. In this case, click *Install this driver software anyway*.

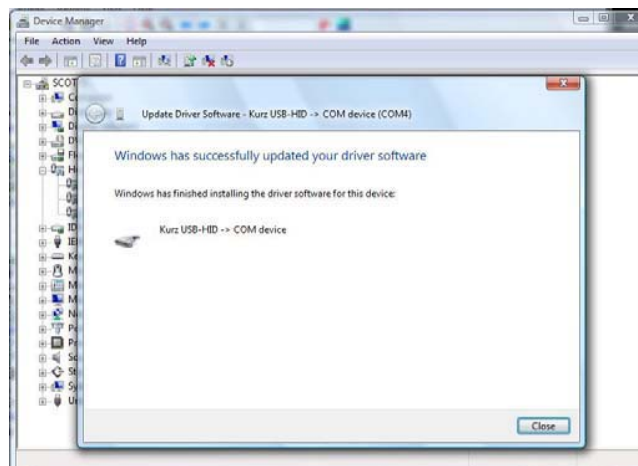


Signed Signature

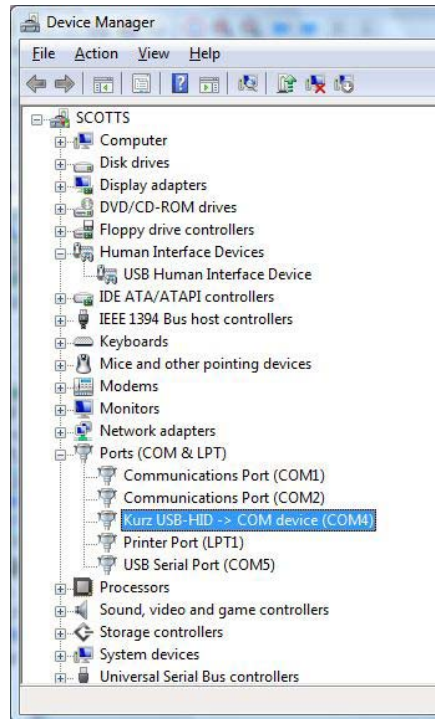


Unverified Publisher

15. Windows will report that it successfully updated your driver software.



16. In the Device Manager the MFTB Device will now register as a COM port.

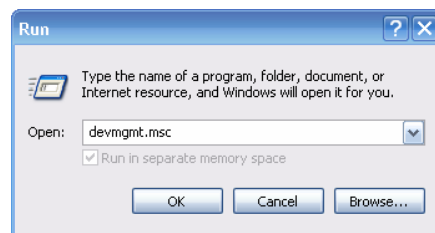


Explicit Driver Installation (Kurz USB-HID COM Port)

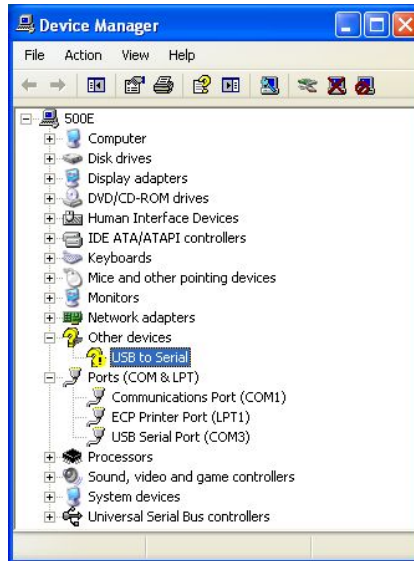
Supported versions of Windows: XP

Under some circumstances, Windows XP fails to load HIDCOM driver, and instead loads the Windows HID driver for the device. In this case, follow the steps below to force Windows to use the HIDCOM driver:

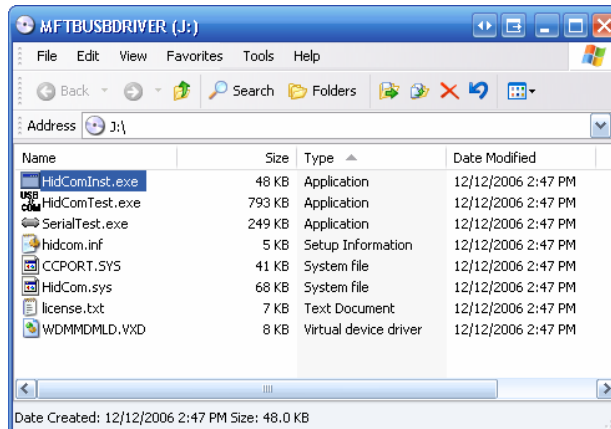
1. Insert the USB driver CD into the CD Drive.
2. Open up the device manager from the Control Panel or by clicking the Start button, clicking Run..., entering *devmgmt.msc* in the text box, and clicking OK.



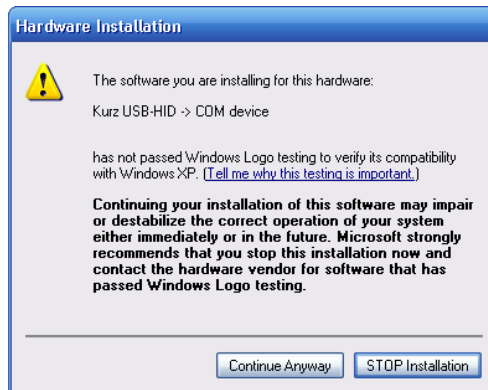
3. Connect the Kurz Instruments MFTB device to the PC via the USB cable, making sure that the device is powered.
4. Expand the *Other devices* section. The MFTB device should be registered as a *USB to Serial* device.



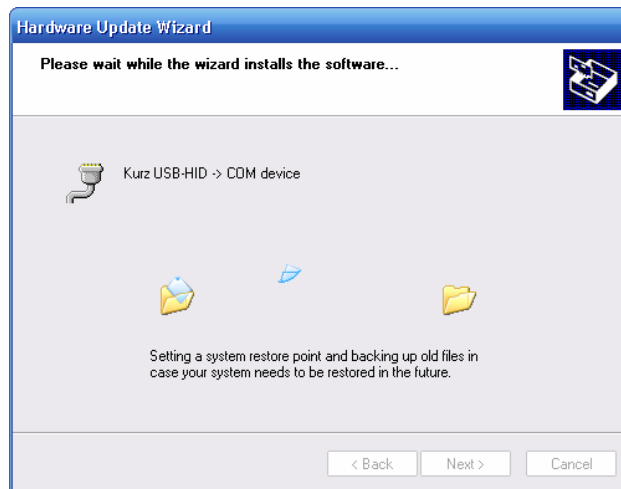
5. Open an explorer window and browse to the Kurz USB Device Driver for the PC and run HidComInst.exe by double clicking on it.



6. Select the Continue Anyway button on the Hardware Installation window.



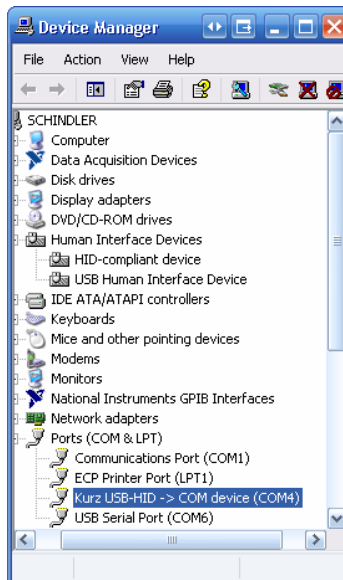
7. The Kurz USB-HID -> COM Device Driver is now being installed.



8. Click the "Finish" button to complete the installation.



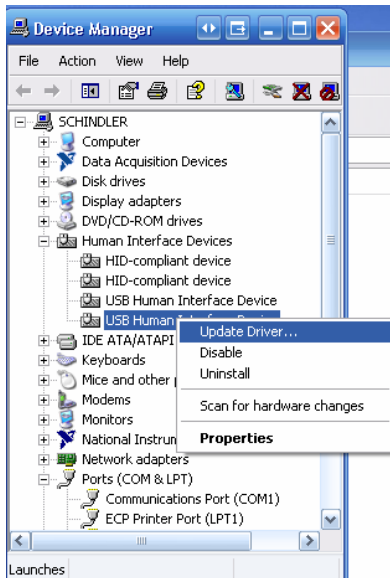
9. On the Device Manager window, check the *Kurz USB-HID -> Com device (COMx)* under the *Ports (COM & LPT)* section, if it is enumerated.



Troubleshooting XP (Kurz USB-HID COM Port)

If the previous steps failed to have the device register as a COM port as shown in the previous step 11 try the following steps.

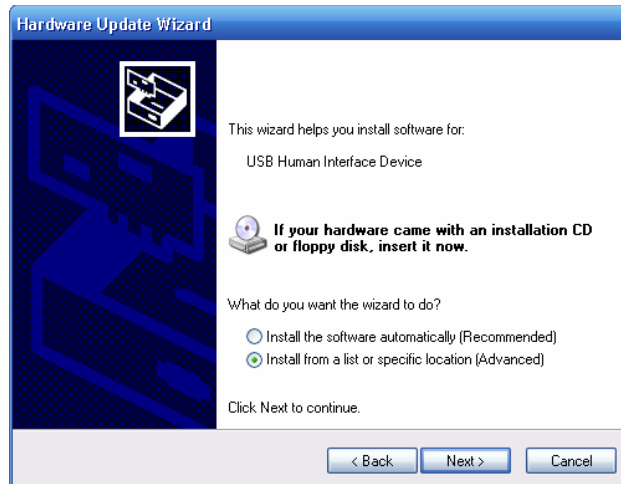
1. Verify that the Kurz Instruments MFTB device is powered and connected via a USB cable to the PC.
2. In the Device Manager find the *USB to Serial*, or *USB Human Interface Device* for the MFTB device. Right click on it, and select *Update Driver*. Note: Kurz has released a newer version of the assembly code that handles the USB data transfers on the MFTB device. The new code registers as a *USB to Serial* device, whereas the old version registers as a *USB Human Interface Device*. The new Kurz USB-HID -> COM driver works with all versions of the MFTB device. Right click on the device and choose *Update Driver...*



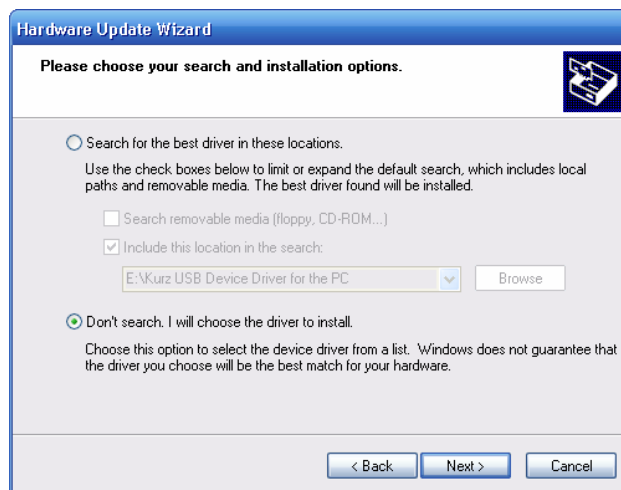
3. Select *No, not this time*, when prompted by the Hardware Update Wizard and click Next.



4. Select *Install from a list or specific location* and click Next.



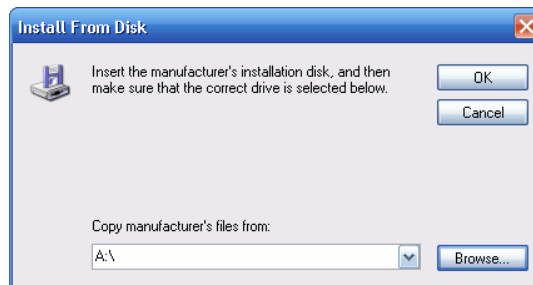
5. Select *Don't search. I will choose the driver to install* and click *Next*.



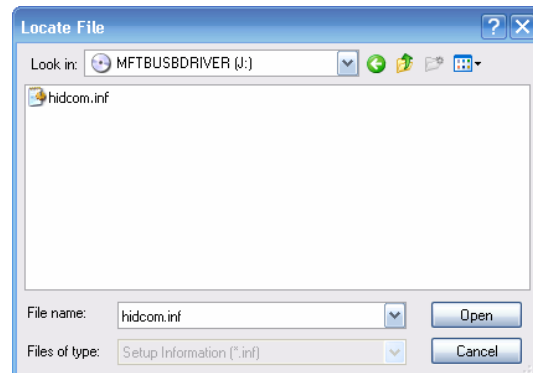
6. If under Model the option *Kurz USB-HID -> COM device* is listed, click it, click *Next*, and skip to step 10.



7. If the option *Kurz USB-HID -> COM device* is not listed so click the *Have Disk...* button.



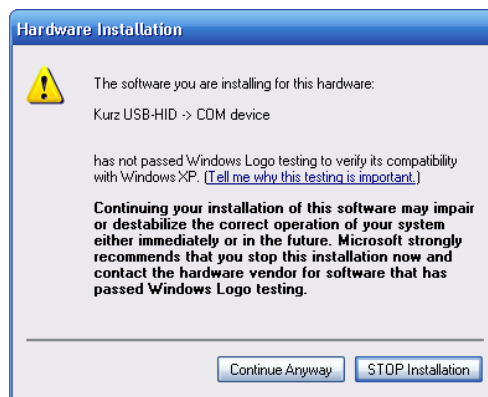
8. In the Locate File window browse to the location of the Kurz USB Device Driver for the PC and select the *hidcom.inf*. Click OK on the Install from Disk window.



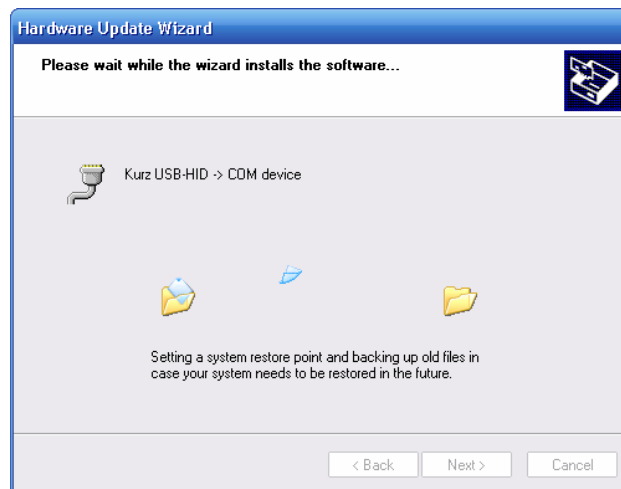
9. In the Hardware Update Wizard should now show the *Kurz USB-HID -> COM device* option. Click it and click next.



10. Select the *Continue Anyway* button on the Hardware Installation window.



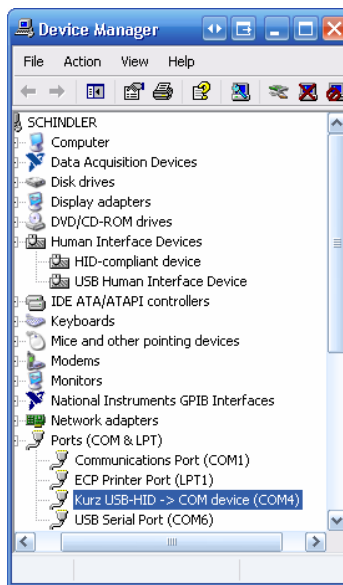
11. The Kurz USB Device Driver is now being installed.



12. Click the *Finish* button to complete the installation.



13. On the Device Manager window, check the *Kurz USB-HID -> Com device (COMx)* under the *Ports (COM & LPT)* section if it is enumerated.



14. Kurz has released a new USB-HID -> COM driver. If the older version of the driver is installed and used with a newer MFTB device the communications will no longer work. The new driver needs to be installed from the Customer CD received with the new MFTB device. If the old driver is used, the device will show in the Device Manager similar to the image labeled Old Driver.



Old Driver