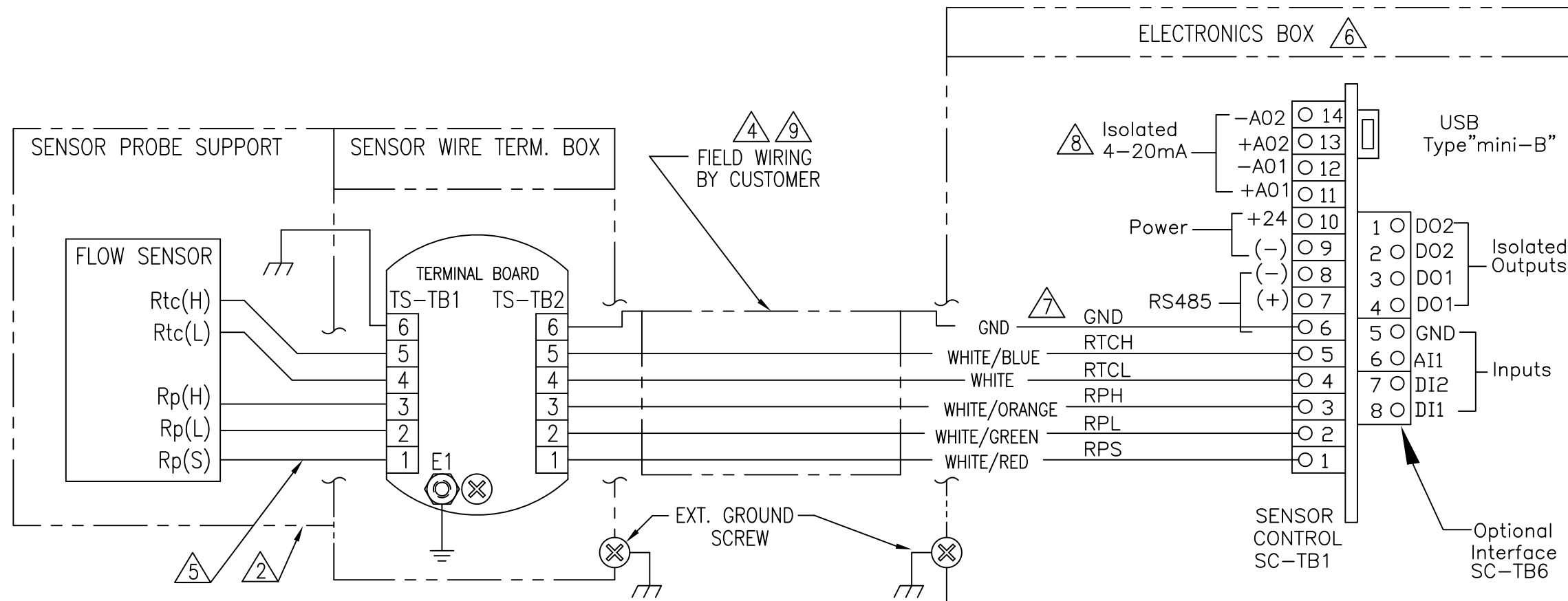


KURZ INSTRUMENTS, INC. PROPRIETARY RIGHTS ARE INCLUDED IN THE INFORMATION DISCLOSED HEREIN. NEITHER THIS DOCUMENT NOR INFORMATION DISCLOSED HEREIN SHALL BE REPRODUCED OR TRANSFERRED TO OTHER DOCUMENTS OR USED OR DISCLOSED TO OTHERS FOR MANUFACTURING OR FOR ANY OTHER PURPOSE EXCEPT AS SPECIFICALLY AUTHORIZED IN WRITING BY KURZ INSTRUMENTS, INC.

REVISIONS					
REV.	DESCRIPTION	BY	CHKD	APRVD	DATE
E	PER ECO C47348	RM	GF	BBB	12/03/08



SENSOR ELECTRONICS JUNCTION BOX SEPARATE, "TS"

NEXT ASSEMBLY	UNLESS OTHERWISE SPECIFIED DIMENSIONS ARE IN INCHES	APPROVALS		KURZ INSTRUMENTS, INC.		
	TOLERANCES ARE	DRAWN BY R. MARTINEZ	DATE 11.18.08			
	FRACTIONS ± 1/16	CHECKED BY G. FOSTER	DATE 11/18/08	MFT B-SERIES, TS CONFIGURATION (ATEX)		
	ANGLES ± 1°-0'	APPROVED B. BURTON	DATE 12/03/08			
	DECIMALS .XX ± 0.03 .XXX ± 0.003			SCALE 1=1	SHEET 1 OF 2	
	ORIG. RELEASE DATE					

4

3

2

1

4

3

2

1

KURZ INSTRUMENTS, INC. PROPRIETARY RIGHTS ARE INCLUDED IN THE INFORMATION DISCLOSED HEREIN. NEITHER THIS DOCUMENT NOR INFORMATION DISCLOSED HEREIN SHALL BE REPRODUCED OR TRANSFERRED TO OTHER DOCUMENTS OR USED OR DISCLOSED TO OTHERS FOR MANUFACTURING OR FOR ANY OTHER PURPOSE EXCEPT AS SPECIFICALLY AUTHORIZED IN WRITING BY KURZ INSTRUMENTS, INC.

NOTES: UNLESS OTHERWISE SPECIFIED

1. REFERENCE DESIGNATORS AND TERMINAL NO. ARE FOR REFERENCE ONLY AND MAY NOT APPEAR ON COMPONENTS.

2. KURZ SENSOR SERIAL NO. TO BE SCRIBED APPROX WHERE SHOWN.

3. N/A

4. SAFETY COMPLIANCE WITH SEALS DIRECTED TO EACH ENCLOSURE. 5-WIRE CABLE ELEMENT MUST HAVE MATCHED RESISTANCE ON EACH WIRE SO THE SENSOR BRIDGE CIRCUIT CAN COMPENSATE FOR THE SENSOR LEAD RESISTANCE. GND WIRE #6 IS OPTIONAL

CONSTRAINTS:

MAXIMUM WIRE LENGTH FOR 1Ω PER WIRE

AWG	MAX. LENGTH (FT)
18	157
16	249
14	396
12	630

$$|E: |WIRE(R_{ph}) - WIRE(R_{pl})| \leq 0.01\Omega, \Delta R 0.01\Omega \text{ MAX.}$$

5. OBSERVE SENSOR LEAD COLOR CHART BELOW:

SENSOR LEAD COLOR CHART		
SENSOR WIRE DESCRIPTION	TFL/TFZ WIRE COLOR	TFL CABLE WIRE COLOR
R <sub>p</sub> SENSE LEAD, R <sub>p</sub> (S)	RED	WHITE/RED
R <sub>p</sub> LOW SIDE, R <sub>p</sub> (L)	RED	WHITE/GREEN
R <sub>p</sub> HIGH SIDE, R <sub>p</sub> (H)	YELLOW	WHITE/ORANGE
R <sub>tc</sub> LOW SIDE, R <sub>tc</sub> (L)	WHITE	WHITE
R <sub>tc</sub> HIGH SIDE, R <sub>tc</sub> (H)	WHITE	WHITE/BLUE
GROUND	N/A	BRAIDED SHIELD

6. SEE PRINCIPLE FIELD WIRING DIAGRAM 342038

7. SENSOR WIRING NOT IN A SHIELD CONDUIT CAN USE A BRAIDED SHIELD CABLE AND A SHORT "PIGTAIL" FOR THE SHIELD TERMINATION

8. ON STANDARD SENSOR CONTROL PCB SC-TB6 HAS 14 TERMINALS WITH TWO ANALOG OUTPUTS (AS SHOWN).

ON SENSOR CONTROL PCB WITH HART OPTION SC-TB6 HAS ONLY 12 TERMINALS WITH ONLY ONE ANALOG OUTPUT (NOT SHOWN).

9. TO PREVENT CONDENSATION INSIDE THE ENCLOSURE, KURZ RECOMMENDS CONDUIT SEALS LIKE KILLARK'S ENY-2 OR EQUIVALENT TO BE INSTALLED ON CONDUIT ENTRIES.

KURZ INSTRUMENTS, INC.

FIELD WIRING DIAGRAM  
MFT B-SERIES, TS CONFIGURATION (ATEX)

DWG. SIZE	DWG. NO.	REV.
B	342039	E
SCALE	SHEET 2 OF 2	
NONE		